

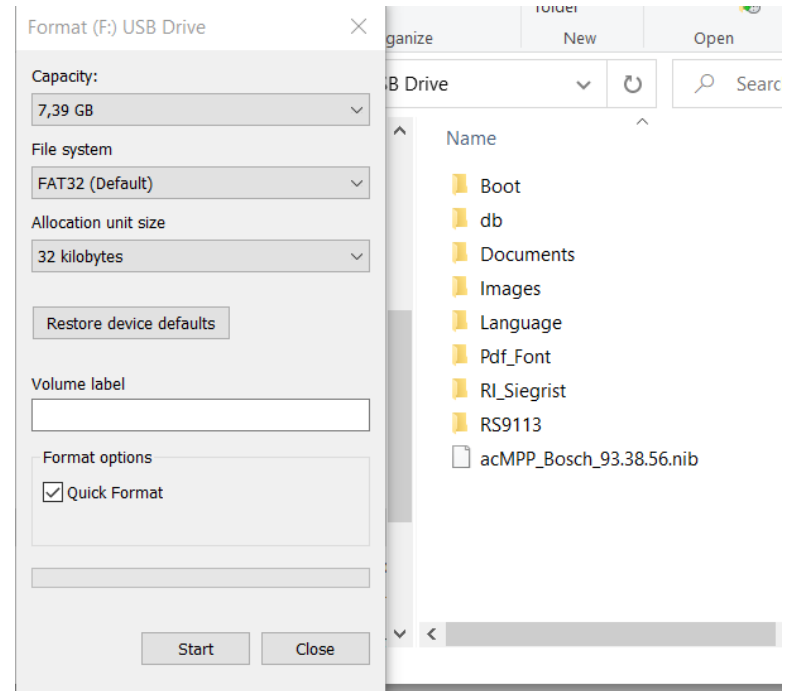
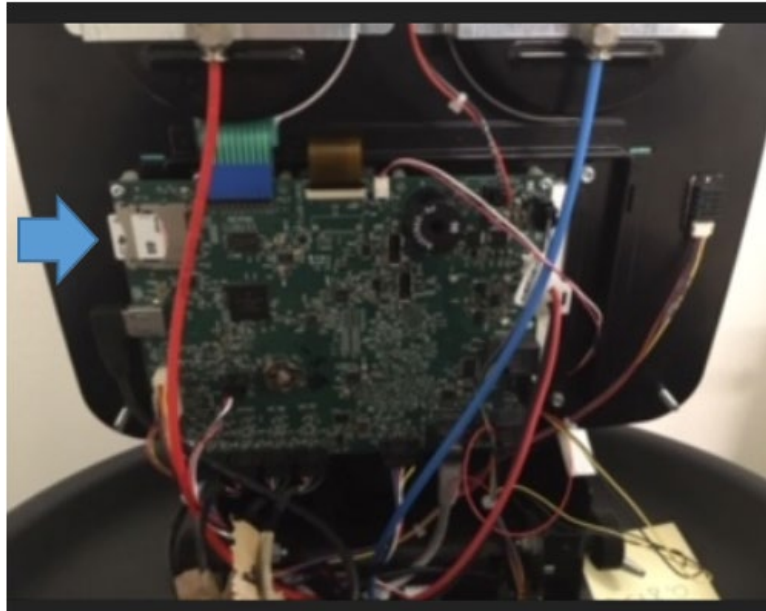
A decorative header at the top of the page featuring a series of overlapping, colorful geometric shapes (triangles and polygons) in shades of red, purple, blue, cyan, and green.

# **SERVICE BOARD RESET**

AA-AS/TSS-11EU

# Service Board Reset

## Format SD card as FAT 32



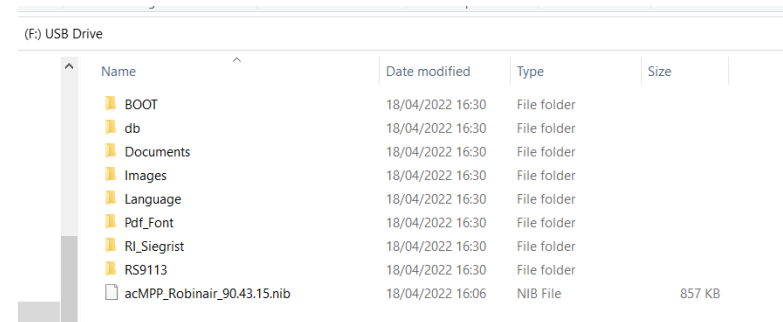
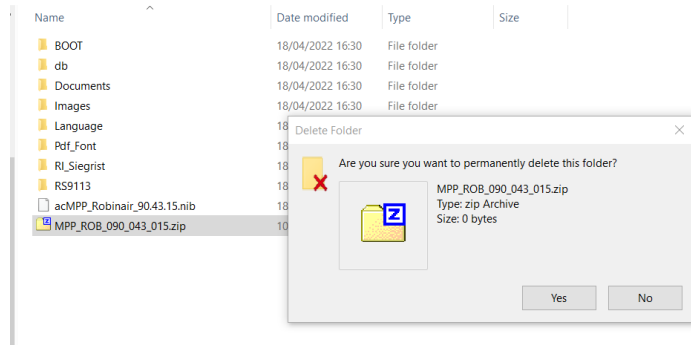
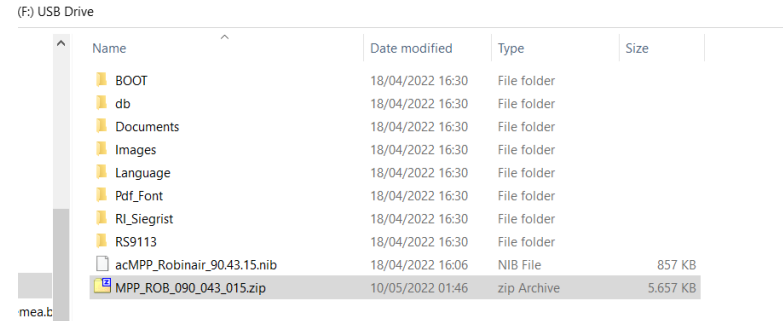
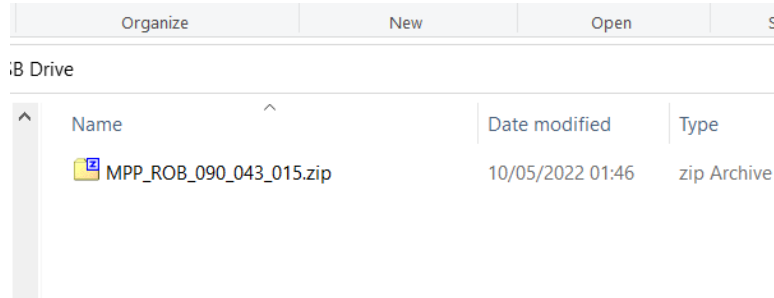
# Service Board Reset

## Unzip the service software in the SD card

Brand	Productname	Refrigerant	Control Board part number	SW-version (in EDIS)
Bosch	ACS 753	R134a	S P00 101 498	075.040.023
Bosch	ACS 763	R1234yf	S P00 101 498	075.040.023
Bosch	ACS 863	R1234yf	S P00 101 498	075.040.023
Bosch	ACS 653	R134a	S P00 101 888	090.040.023
Bosch	ACS 663	R1234yf	S P00 101 888	090.040.023
Bosch	ACS 553 and Variant	R134a	S P01 501 729	105.040.023
Bosch	ACS 563 and Variant	R1234yf	S P01 501 729	105.040.023
Robinair	AC1X34-5i and Variant	R134a	S P00 101 888	090.040.023
Robinair	AC1X34-7i	R134a	S P00 101 498	075.040.023
Robinair	AC1234-5i and Variant	R1234yf	S P00 101 888	090.040.023
Robinair	AC1234-7i	R1234yf	S P00 101 498	075.040.023
Robinair	AC1234-8i	R1234yf	S P00 101 498	075.040.023
Robinair	AC1X34-3i and Variant	R134a	S P01 501 729	105.040.023
Robinair	AC1234-3i and Variant	R1234yf	S P01 501 729	105.040.023

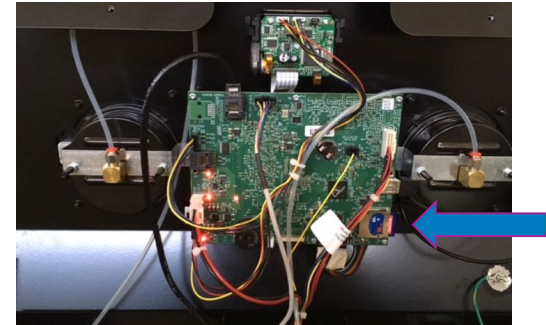
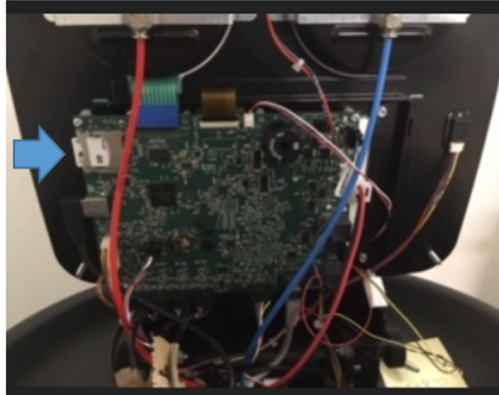
# Service Board Reset

## Unzip the service file in the SD card, no subfolders, extraction in main route



# Service Board Reset

## Insert the SD card in the mother board



# Service Board Reset

## Download the main machine software

Brand	Productname	Refrigerant	Current SW version
Bosch	ACS 553 and variants	R134a	106.043.015
Bosch	ACS 653 and variants	R134a	091.043.015
Bosch	ACS 753 and variants	R134a	076.043.015
Bosch	ACS 563 and variants	R1234yf	106.043.015
Bosch	ACS 663 and variants	R1234yf	091.043.015
Bosch	ACS 763 and variants	R1234yf	076.043.015
Bosch	ACS 863 and variants	R1234yf	076.043.015

**VERY IMPORTANT:** the software **xxx.043.015** is downloadable by EDIS and [Bosch Download](#) by a zip file with following files inside:

- **bosch\_091\_043\_015.zip:** 1) MPP\_Bosch\_091\_043.zip. 2) Readme.txt
- **bosch\_076\_043\_015.zip:** 1) HPP\_Bosch\_076\_043.zip 2) Readme.txt
- **bosch\_106\_043\_015.zip:** 1) LPP\_Bosch\_106\_043.zip 2) Readme.txt

Brand	Productname	Refrigerant	Current SW version
Robinair	AC1X34-3i and variants	R134a	106.043.015
Robinair	AC1X34-5i and variants	R134a	091.043.015
Robinair	AC1X34-7i and variants	R134a	076.043.015
Robinair	AC1234-3i and variants	R1234yf	106.043.015
Robinair	AC1234-5i and variants	R1234yf	091.043.015
Robinair	AC1234-7i and variants	R1234yf	076.043.015
Robinair	AC1234-8i and variants	R1234yf	076.043.015

**VERY IMPORTANT:** the software **xxx.043.015** is downloadable by <https://uk.robinair.com/products/automotive> and <https://de.robinair.com/products/automotive>

- Open the desired product icon, scroll down and get software update link
- **robinair\_091\_043\_015.zip:** 1) MPP\_Robinair\_091\_043.zip. 2) Readme.txt
  - **robinair\_076\_043\_015.zip:** 1) HPP\_Robinair\_076\_043.zip 2) Readme.txt
  - **robinair\_106\_043\_015.zip:** 1) LPP\_Robinair\_106\_043.zip 2) Readme.txt

# Service Board Reset

## Use only USB2.0 stick

### Format USB as FAT 32

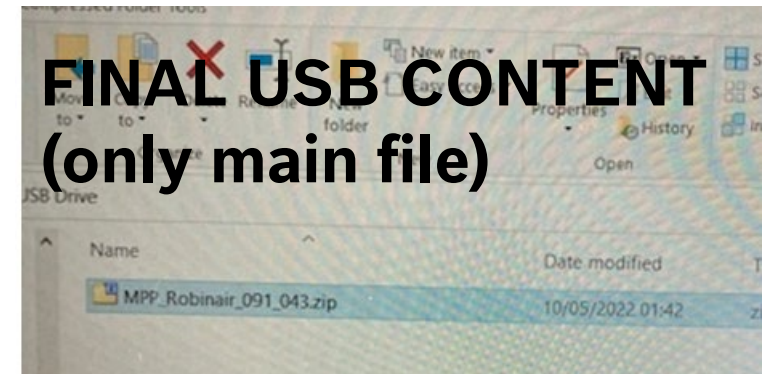
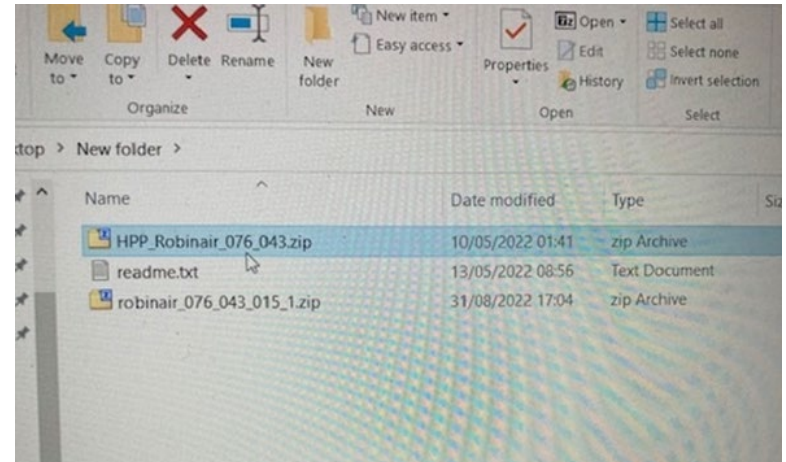
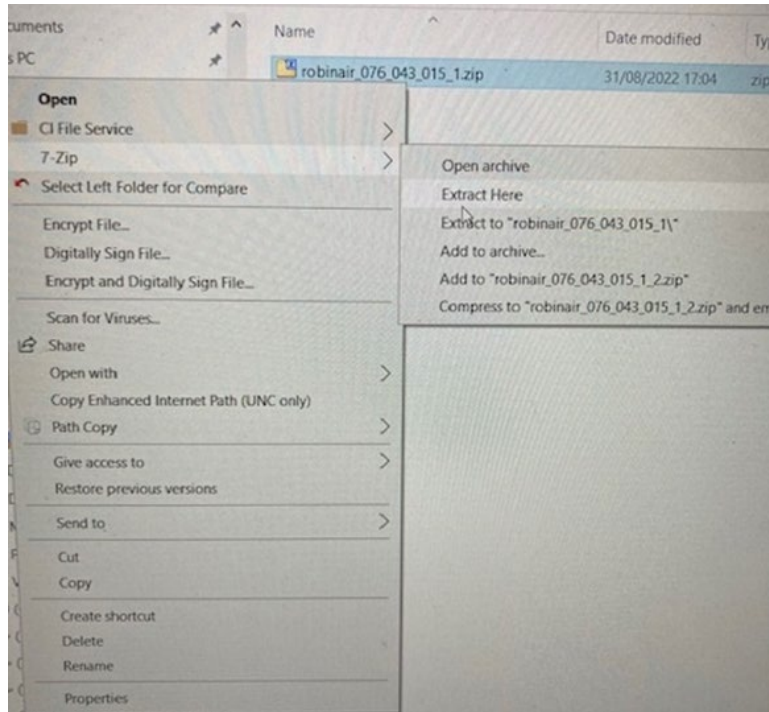




# Service Board Reset

## Extract software and get .ZIP and .TXT files

## COPY and PASTE on USB the .ZIP file extracted





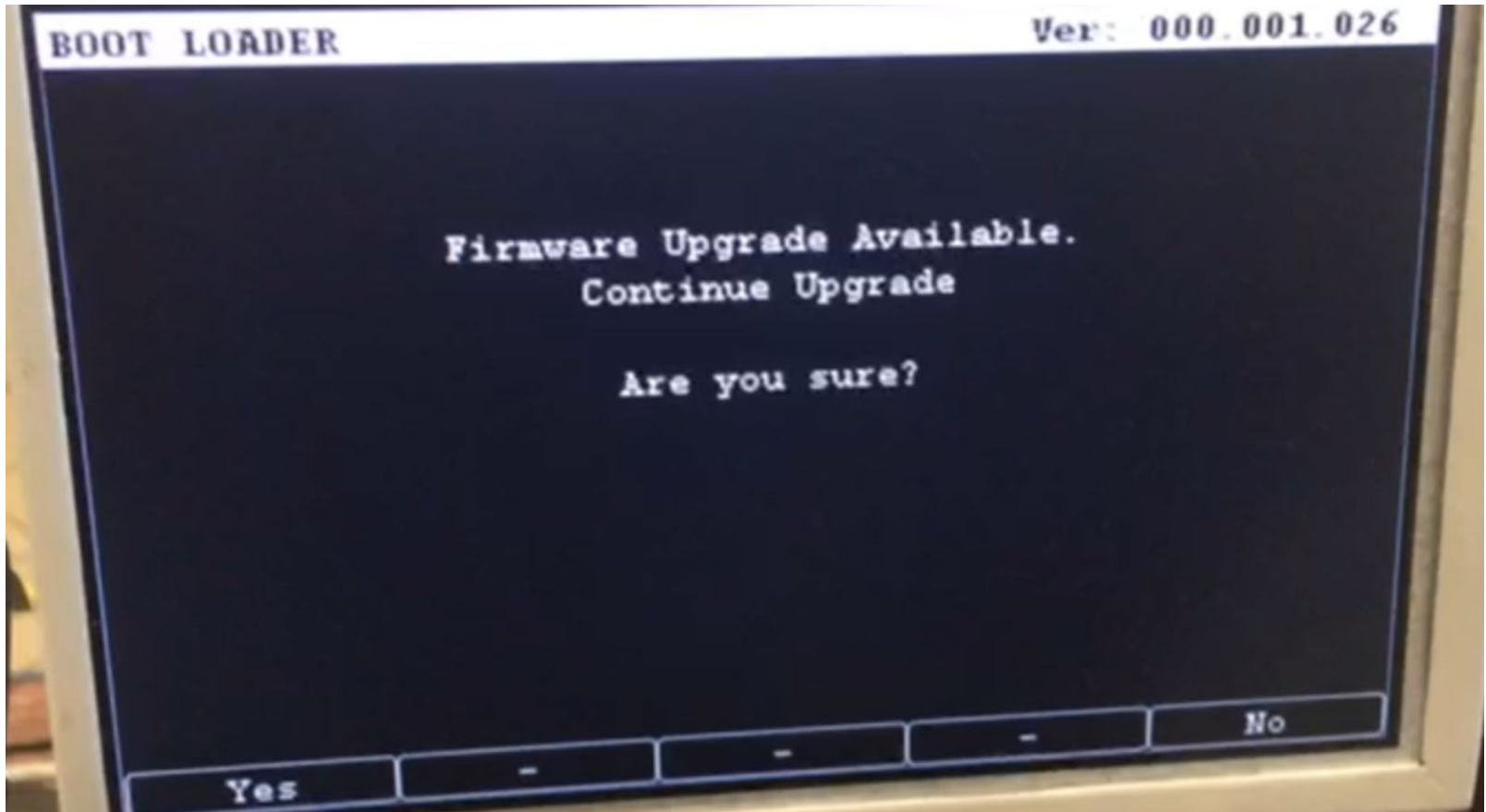
# Service Board Reset

## Open the unit front cover



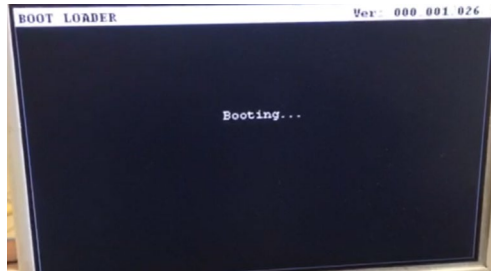
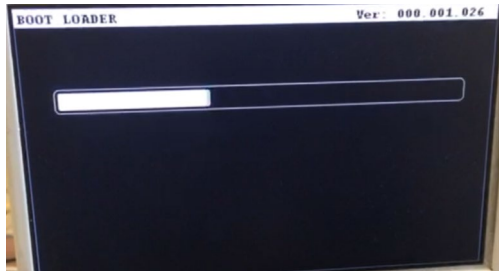
# Service Board Reset

Unit ask for firmware update, press YES



# Service Board Reset

## Processing Firmware update



# Service Board Reset

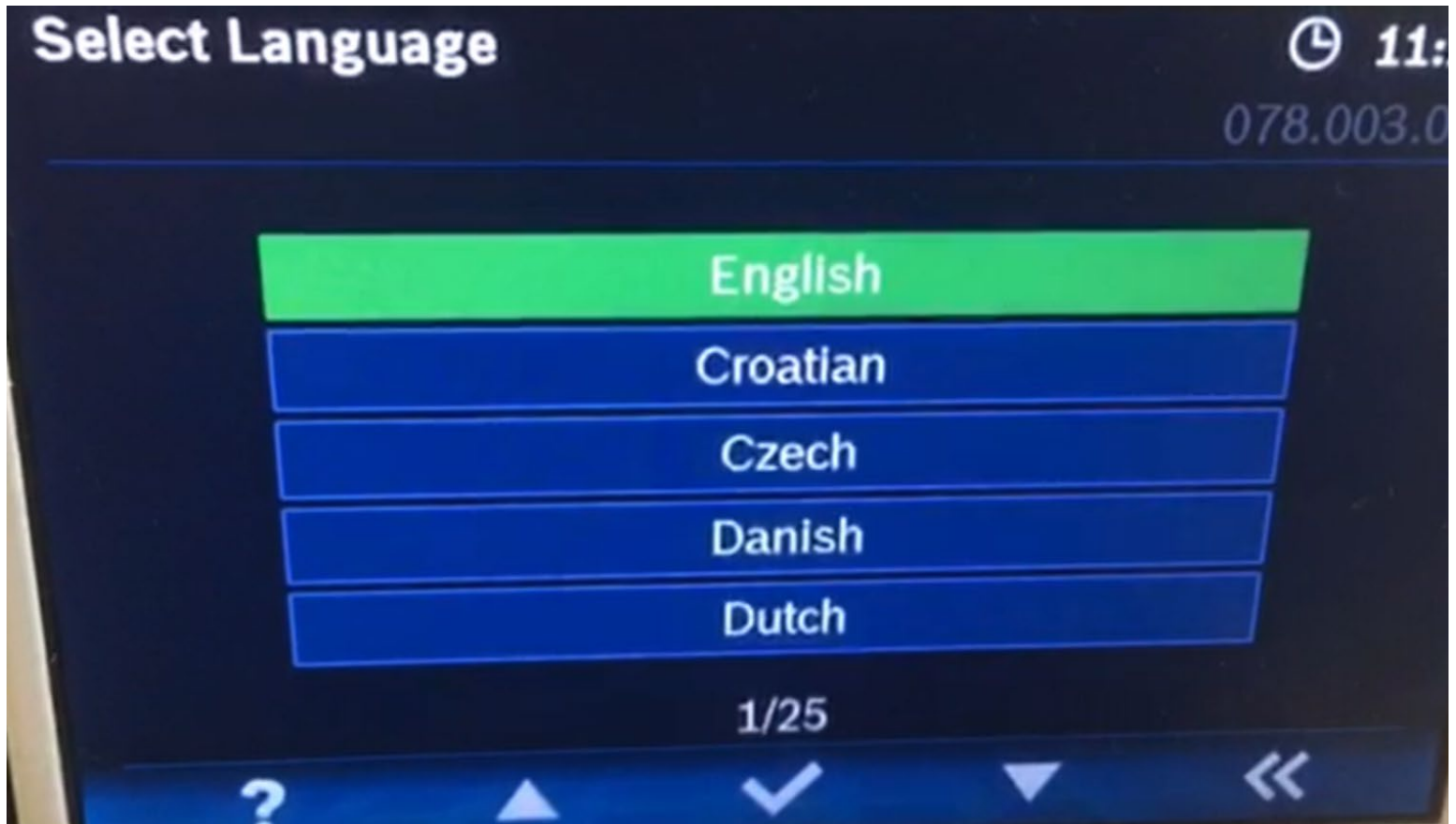
## Board Reset

- Unit ask to RESET the board erasing all the data and calibrations stored, press YES and please wait. After that service routine starts with required settings



# Service Board Reset

## Select Languages and confirm.



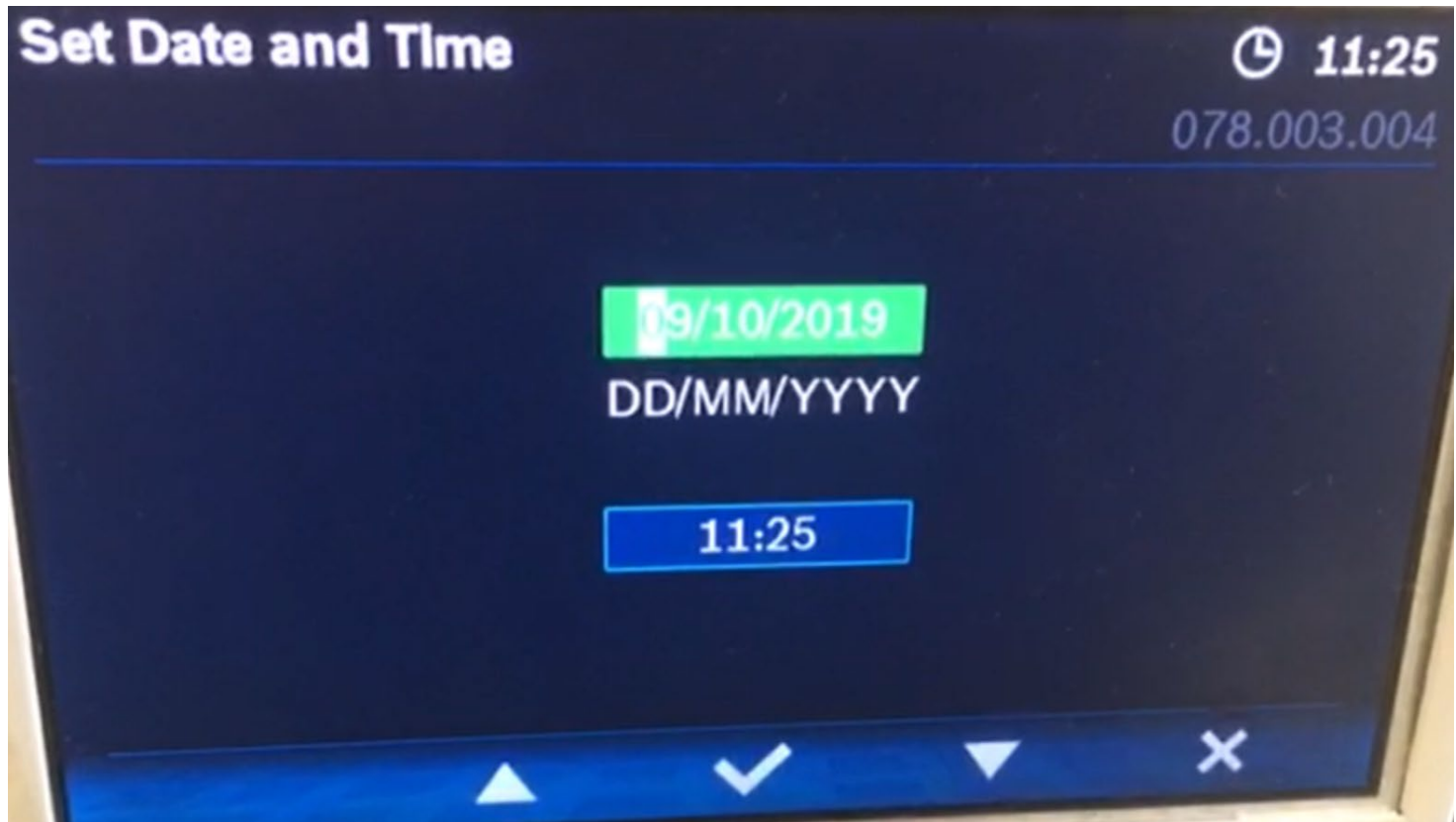
# Service Board Reset

Select AC/ACS model (unit require the input 2 times) and confirm.



# Service Board Reset

## Set time/date and confirm.

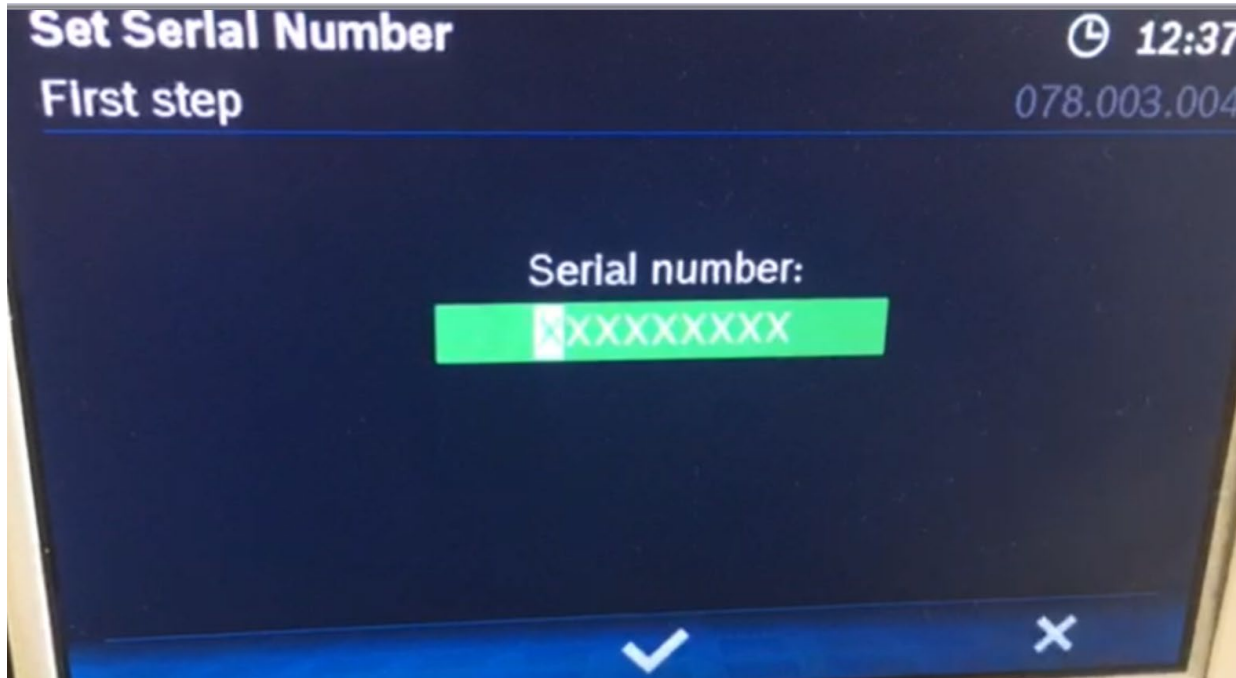
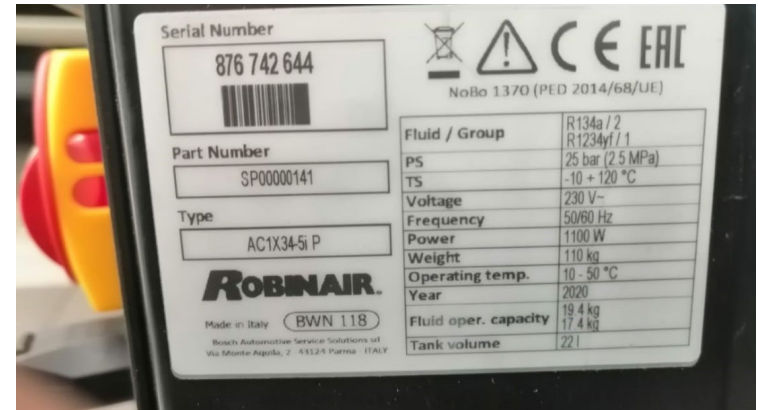




# Service Board Reset

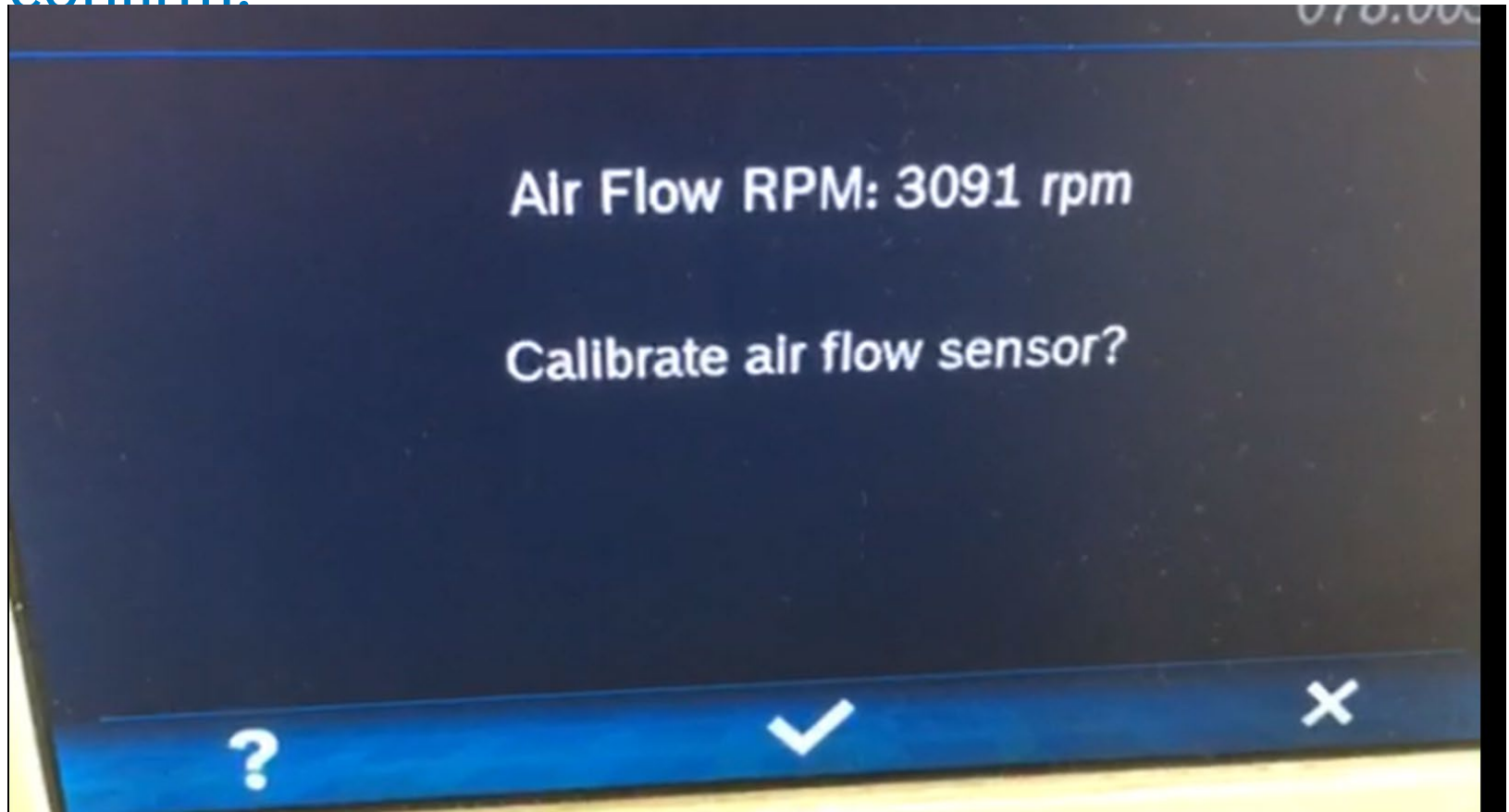
## Set Serial Number

- Set serial number (unit require the input 2 times). Take the one in the unit data plate and confirm.



# Service Board Reset

Perform air flow calibration (if unit is 1234yf) and confirm.



# Service Board Reset

## Tank calibration (see repair manual instruction)

Open front cover, unscrew the tank, free the scale



# Service Board Reset

## Tank calibration (see repair manual instruction)

First step, cal weight 0Kg with scale platform free





# Service Board Reset

## Tank calibration (see repair manual instruction)

Second step, with an accurate sample weight (suggested 10Kg)



# Service Board Reset

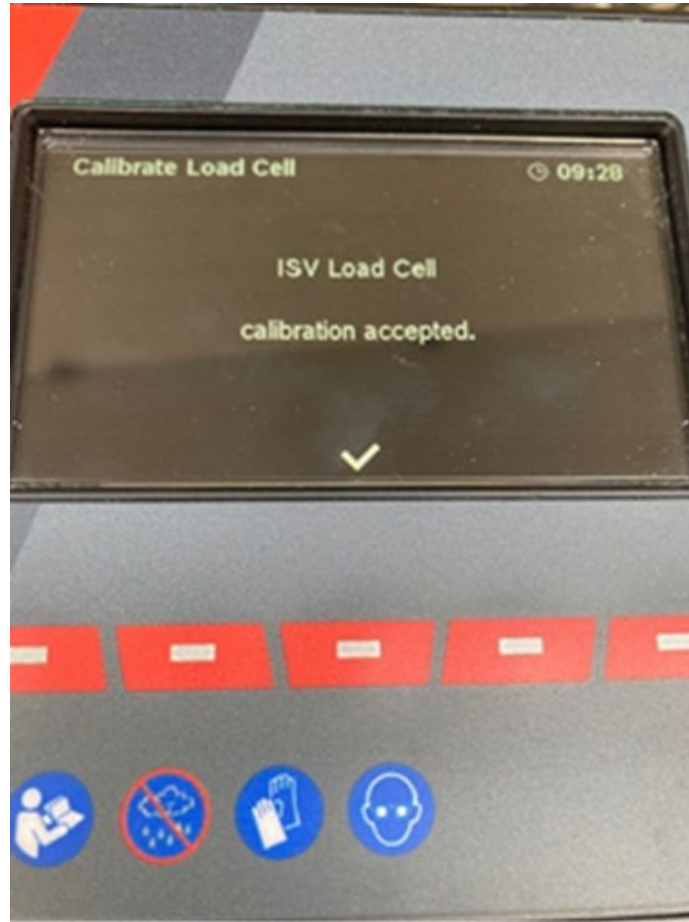
## Tank calibration (see repair manual instruction)

Third step, check with 1 Kg (mandatory)



# Service Board Reset

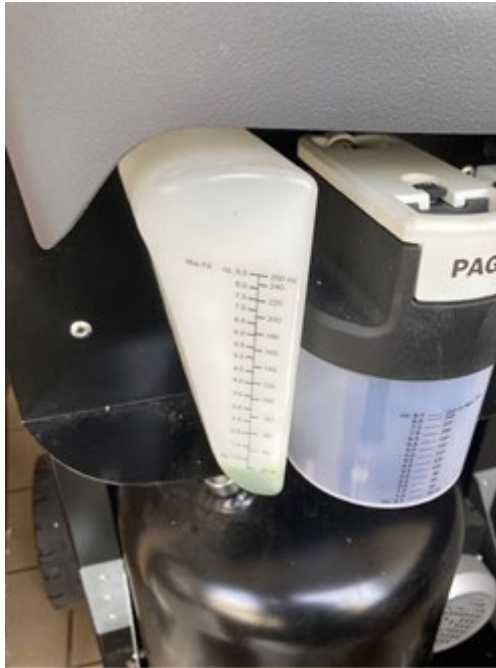
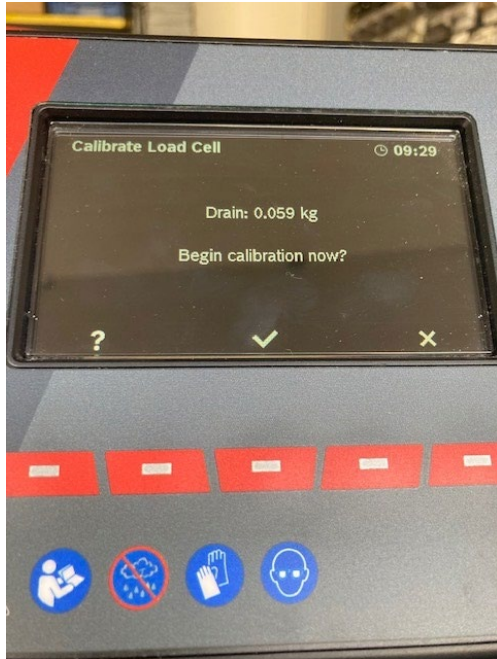
## Tank calibration (see repair manual instruction)





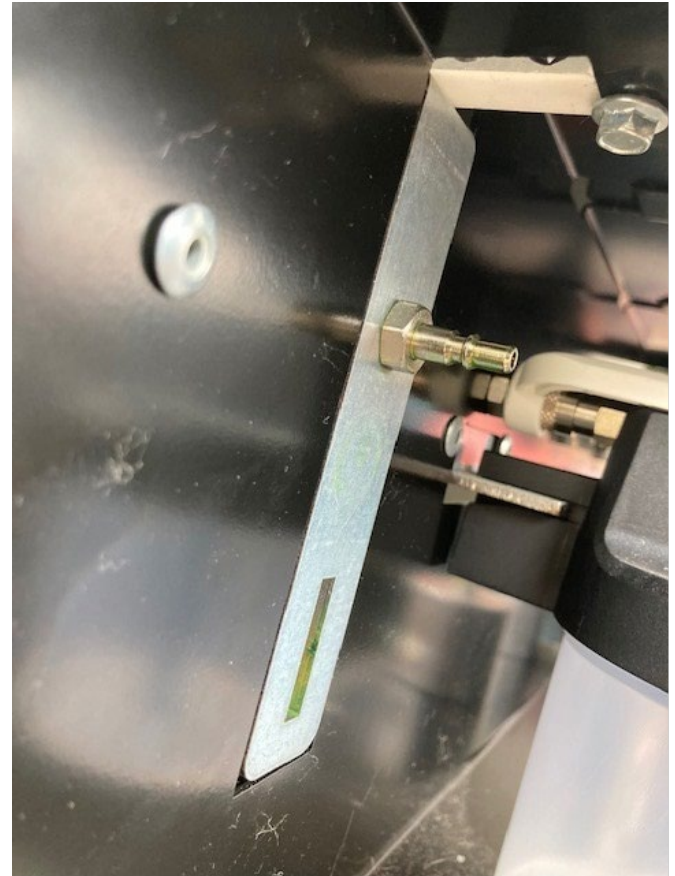
# Service Board Reset

Perform oil/dye calibration (the oil/dye load cells number depend on the AC/ACS unit model) and confirm (see also repair manual instruction).



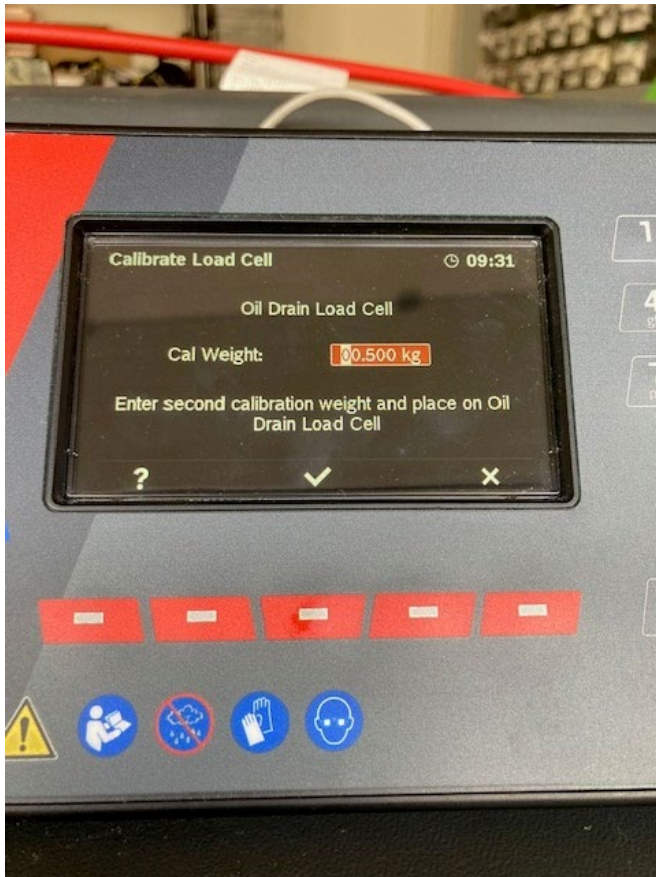
# Service Board Reset

## First step with load cell free



# Service Board Reset

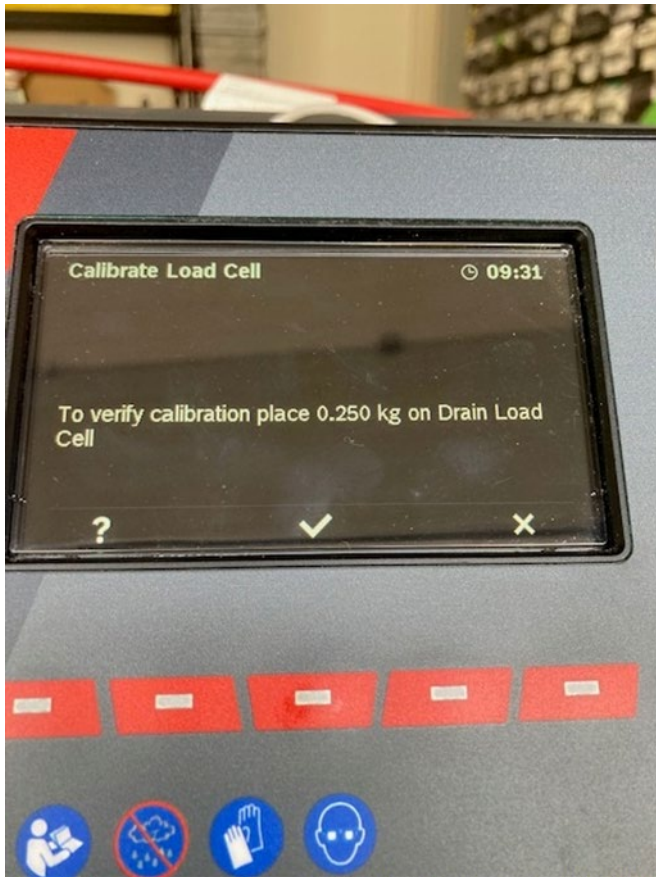
## Second step, sample weight (500 gr suggested)





# Service Board Reset

Third step, check sample weight (250gr mandatory)



# Service Board Reset

## Oil/Dye calibration (see instruction in the manual)



# Service Board Reset

## Oil/Dye calibration: the sample weights

### New AC calibration weight 250 g and 500 g

#### Affected

Bosch: ACS 511, ACS 611, ACS 652, ACS 752  
Robinair: AC595PRO, AC690PRO and older models, AC695PRO, AC788PRO

#### Type Andiamo:

Bosch: ACS 753, ACS 763, ACS 863  
Robinair: AC1X34-7i, AC1234-7i, AC1234-8i

#### Important note

New calibration weight of 250 g and 500 g to calibrate the oil scales for all listened models above.  
Both calibration weight have a male and a female fitting.



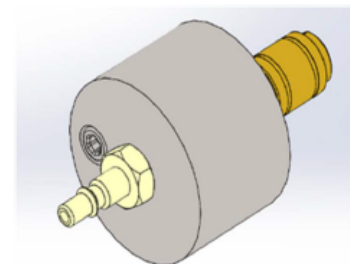
For all "Andiamo" model you need a 250 g calibration weight to calibrate the oil scales.

#### Order numbers

Calibration weight 250 g with fittings male / female	S P00 101 846
Calibration weight 500 g with fittings male / female	S P00 101 847



**BOSCH**  
Technik fürs Leben



Tolerance  $\pm 1$  g



**BOSCH**

# Service Board Reset

## Select Imperial/Metric and confirm.





# Service Board Reset

## Edit garage data and confirm.



# Service Board Reset

## Install the encrypt software.

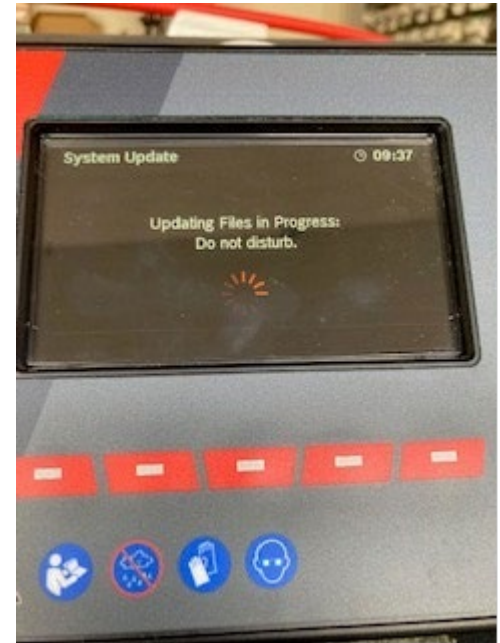
- Now unit is ready to install the last encrypt software present in the USB dongle.
- The encryption can take several minutes, the % progress is shown in the display.



# Service Board Reset

## Install the encrypt software.

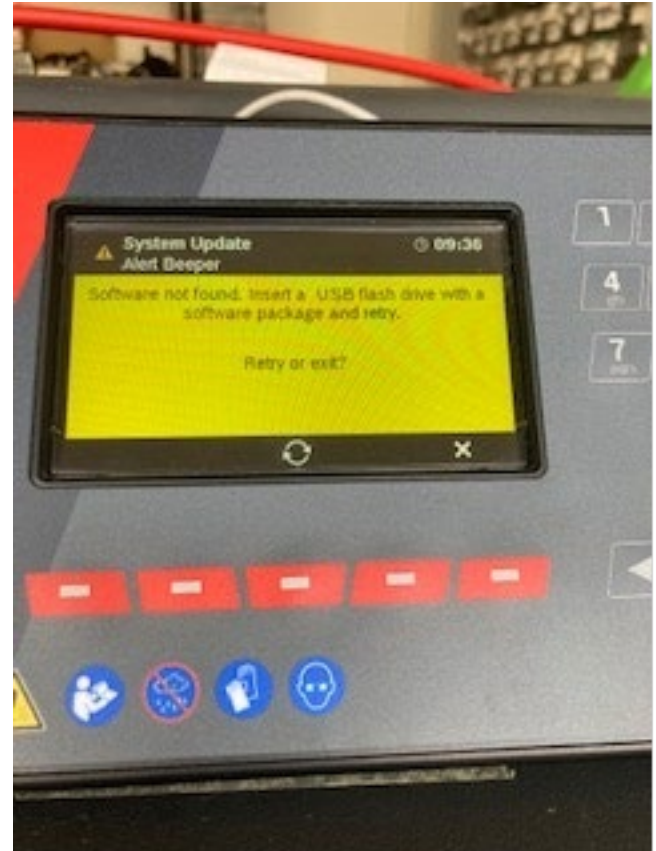
- Now unit is ready to install the last encrypt software present in the USB dongle.
- The encryption can take several minutes, the % progress is shown in the display.



# Service Board Reset

## Install the encrypt software.

- If the dongle is not connected/programmed and the unit does not find the software, an error message will be shown on display asking to retry.



# Service Board Reset

## Unit reboot

- When unit reboot and starts in stand by page, please switch off and close the cover (take care to safe the tank with screws).
- Then final upgrade (self-launched)

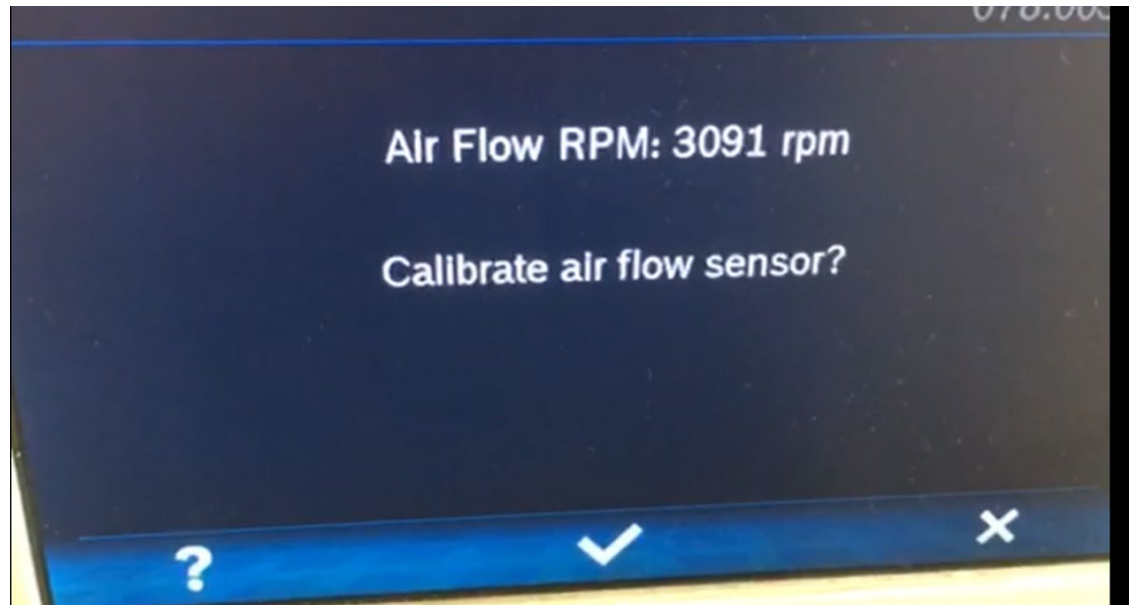




# Service Board Reset

## Air Flow Calibration (unit 1234yf)

- Switch on again and repeat air flow calibration with cover close.



# Service Board Reset

## Unit Activation

- Digit the activation code again, (using original serial number the activation code is still the same).
- If activation code has been lost, contact Bosch.
- **IMPORTANT** with machine software xxx.043.015 the activation code is NOT required anymore







**Now you're ready to work!**